

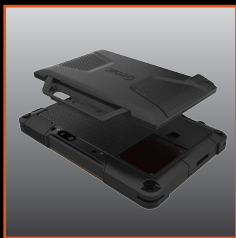
Getac

Rugged Mobile Computing Solutions

T800 Fully Rugged Tablet



- 8.1" HD LumiBond® 2.0 display for better viewing experience
- Getac proprietary SnapBack add-on featuring Smart card and contactless RFID reader Combo or 2nd expanded battery
- Choice of 1D/2D imager barcode reader, Serial port, Micro SD or Ethernet
- Up to 10 hours of battery life with one charge. LifeSupport™ battery swappable technology for uninterrupted battery life
- Enhanced Enterprise Security with optional Windows Disk Encryption, TPM 2.0 and many more multi-factor authentication options.



SnapBack Add-on



Office Dock





T800 Tablet

Built for today's mobile workforce, the new T800 fully rugged tablet features an 8.1" HD LumiBond® 2.0 display for better viewing experience, quad-core Intel processor technology, the latest wireless technology, runs Windows 10 Pro and has unique SnapBack add-ons. We designed the T800 to be the perfect combination of a compact rugged tablet without sacrificing screen size.

Customised Off-The-Shelf

The fact that we own our design and manufacturing process means that Getac can customise units to almost any configuration if the customer requires but we have two standard configurations of the T800 that should meet the majority of end users needs.

T800 BASIC MODEL (See back page for spec)

For the facility based mobile worker

The standard basic model of the T800 is designed for the mobile worker who needs the full day battery-life, full-office functionality and rugged credentials of the T800 but, perhaps being based at a single facility, does not require 4G connection or navigation assistance.

With a range of hardware module upgrades available as well as industry leading warranty, service and support options, this can be a complete mobile computing solution.

T800 PREMIUM MODEL (See back page for spec)

For the on-the-road mobile worker

The standard premium model of the T800 is designed for the mobile worker who needs the full range of connectivity options. With dedicated GPS, 4G/LTE, Bluetooth® and tri-pass-through dock connection, this is the choice of workers who need to be connected wherever they are. Getac's own innovative antenna technology and the ability to connect to a vehicles hi-gain antenna ensure a maximum of signal strength and a minimum of coverage dropouts.

Forklift Mounting

SKU / Part Number	Short Description
GDVAG3	Gamber Johnson Universal Mounting Option, Secondary Clam Shell
GDVAG4	Gamber Johnson Universal Mounting Option, Dual Clam Shell with 3" Arm and small plate
GDVAG5	Gamber Johnson Keyboard Mount
GDVAG6	Gamber Johnson Barcode Scanner Mount
592GUK000026	Havis Overhead Forklift Mount System

Docking Stations**

SKU / Part Number	Short Description	Antenna	Specifications (H x W x D mm)	USB 2.0	USB 3.0	Ext. VGA	HDMI	Ethernet	Audio I/O	Serial	DC in Jack
GDVMH4	Havis Docking Station with DC only	No	206 x 178 x 89 Weight 0.73kg	0	0	0	0	0	0	0	1
GDVWH3	Havis Docking Station with DC & Tri Pass Through	Triple High-Gain		0	0	0	0	0	0	0	1
GDVNH2	Havis Docking Station with Replication	No		0	2	0	0	1	0	1	1
GDVPH2	Havis Docking Station with Replication & Tri Pass Through	Triple High-Gain		0	2	0	0	1	0	1	1
GDVNG4	Gamber Johnson Docking Station with Replication	No	242 x 214 x 89 Weight 1.09kg	0	2	0	0	1	0	1	1
GDVPG4	Gamber Johnson Docking Station with Replication & Tri Pass Through	Triple RF Pass-through (SMA)		0	2	0	0	1	0	1	1
GDOFKA	Getac Office dock with AC adapter	No	193 x 216 x 89 Weight 0.95kg	3	1	1	1	1	1 Each	0	1

ACCESSORIES

Power Accessories

SKU / Part Number	Short Description
GAA6K1	AC Adapter with Power Cord (spare)
GAD2X1	Getac 11-16V, 22-32V DC Vehicle Adapter
GBM4X1	Main Battery 4-Cell 4200mAh
GCMCK5	External Dual Bay Main Battery Charger
GCECK1	Multi-Bay Battery Charger - charges upto 8 batteries
GAD3L1	Lind 12-16Vdc input Power Adapter
GAD4L1	Lind 12-32Vdc input Power Adapter
592GUK000030	Lind AC/DC Adapter
592GUK000016	Lind 12-32Vdc input -- Isolated DC/DC Adapter - forklift
592GUK000017	Lind 20-60Vdc input -- Isolated DC/DC Adapter - forklift
592GUK000018	Lind 70-110Vdc input -- Isolated DC/DC Adapter - forklift



Power Accessories



Battery Charger

General Accessories & Carrying Solutions

SKU / Part Number	Short Description
GORSX1	SnapBack - Smartcard and RFID Reader
GBS4X1	SnapBack - Expanded Battery 4-Cell 2100mAh (T800)
GOMSX1	SnapBack - Smartcard and MSR Reader
GMPSX4	Capacitive Stylus & Tether
GMPDX2	Digitizer Pen & Tether
GMPFX8	Protection Film
GMBCX3	Carry bag
GMS2X2	Shoulder strap (2 point shoulder strap)
GMHSX4	Hand strap
GMRSX1	Wrist strap



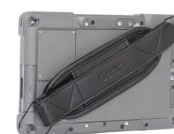
SnapBack Accessories



Carry Bags

Passive Cradles*

SKU / Part Number	Short Description	Antenna	Specifications (H x W x D mm)
GDVAP1	Passive Holder with Spring Stud Block (AMPS)	No	
GDVAP2	Passive Holder with Spring Stud Block for Cable Plug Attachment & tilt swivel (AMPS)	No	
GDVAP3	Passive Holder with Key Locking & Tilt Swivel (AMPS)	No	
GDVAP4	Passive Holder with Spring Stud Block & Tilt Swivel for Cable Plug Attachment (AMPS)	No	
GDVWH1	Havis Passive Docking Station with Tri Pass Through only	Triple High-Gain	206 x 178 x 89 Weight 0.73kg
GDVMH3	Havis Passive Docking Station	No	
GDVMG3	Gamber Johnson Docking Station	No	242 x 214 x 89 Weight 1.09kg



Straps



Havis Vehicle Docks



Gamber Johnson Vehicle Dock



Vehicle Cradles



Office Dock

All specifications and descriptions are subject to change. Please confirm full description and specification when placing orders.

* All cradles are supplied without power supplies

** All Docking Stations are supplied without power supplies

Email: sales-getac-UK@getac.com

T800 Fully Rugged 8.1" Tablet

Getac recommends Windows.



Specifications

Operating System	Windows 10 Professional
Mobile Computing Platform	Intel® Atom Processor x7-Z8750 1.6 GHz, burst up to 2.56 GHz - 2MB Cache
VGA Controller	Intel® HD Graphics
Display	8.1" IPS TFT LCD HD (1280 x 800) 600 nits LumiBond® display with Getac sunlight readable technology
Storage & Memory	4GB LPDDR3 expandable to 8GB eMMC 64GB / 128GB
Keyboard	6 tablet buttons (Windows, Power, Function Key, Camera Capture/Barcode Reader Trigger, Volume Up, Volume Down)
Pointing Device	Touchscreen - Capacitive multi-touch screen - Optional dual mode touchscreen (multi-touch and digitizer)
Expansion Slot	Optional 1D/2D imager barcode reader, Serial port, MicroSD or Ethernet ⁱ Optional SnapBack add-on: Smart Card and contactless RFID/NFC reader combo ⁱⁱ Optional SnapBack add-on: 2nd expanded battery ⁱⁱ Optional SnapBack add-on: Smart card and Magnetic Stripe reader ⁱⁱ Optional SnapBack add-on: Smart Card & UHF RFID reader ⁱⁱ
Communication Interface	Optional 10/100/1000 base-T Ethernet (occupies expansion slot) Intel® Dual Band Wireless-AC 7265, 802.11ac Bluetooth (v4.0) Optional dedicated GPS Optional 4G LTE mobile broadband

I/O Interface	FHD webcam x 1 8M pixels auto focus rear camera x 1 USB 3.0 (9-pin) x 1 Headphone out/Mic-in Combo x 1 DC in Jack x 1 Micro HDMI x 1 Docking connector (24-pin) x 1 Optional RF antenna pass-through for GPS, WWAN and WLAN
Software	Getac Utility (including Power Manager) Getac Geolocation Getac Barcode Manager Adobe® Reader® Optional Absolute DDS® Persistence
Security Feature	TPM 2.0 Optional SnapBack add-on: Smart Card and contactless RFID/NFC reader combo ⁱⁱⁱ Optional SnapBack add-on: Smart Card and Magnetic Stripe reader Optional SnapBack add-on: Smart Card & UHF RFID ^{iv} reader
Power	AC adapter (65W, 100-240VAC, 50 / 60Hz) Li-Ion battery (7.4V, 4200mAh) ^v LifeSupport™ battery swappable technology (only with SnapBack 2nd expanded battery)
Dimension (W x D x H) & Weight	227 x 151 x 24 mm 0.88kg ^{vi}
Rugged Feature	MIL-STD-810G certified and IP65 certified 6 feet drop resistant Optional ANSI/ISA 12.12.01 Vibration & drop resistant e-Mark certified for vehicle usage
Environmental Specification	Temperature ^{vii} : - Operating: -21°C to 50°C / -5.8°F to 122°F - Storage: -51°C to 71°C / -60°F to 160°F Humidity: - 95% RH , non-condensing

T800 Basic Model - Standard Config.	
Memory	4GB RAM
Storage	64GB SSD
Connectivity	Wireless LAN ac Bluetooth

T800 Premium Model - Standard Config.	
Memory	4GB RAM
Storage	128GB SSD
Connectivity	Wireless LAN ac Bluetooth GPS Gobi 5000 WWAN

i. Barcode reader, Serial port, Ethernet, and MicroSD port are mutually exclusive options.
ii. All SnapBack add-ons are mutually exclusive options.
iii. 13.56MHz Contactless RFID/NFC reader (ISO 15693, 14443 A/B, Mifare and FeliCa™ compliant).
iv. US only (902-928MHz, UHF RFID tags of EPC Class 1 Gen 2 ISO18000-63 standards compliant).
EU (865-868MHz, UHF RFID tags of EPC Class 1 Gen2 ISO18000-63 standards compliant)
v. Battery life testing conducted under MobileMark 2007. Battery performance will vary upon software

applications, wireless settings, power management settings, LCD brightness, customized modules and environmental conditions. The battery has a limited number of charge cycles and may eventually need to be replaced by a Getac service provider. Battery life and charge cycles vary by use and settings.
vi. Weight and dimensions vary from configurations and optional accessories.
vii. Tested by a national independent third party test lab following MIL-STD-810G.



Getac UK Limited
Mitac House, Nedge Hill, Telford,
Shropshire, TF3 3AH, U.K.
Tel: +44 1952 207 200
Email: sales-getac-UK@getac.com
www.getac.co.uk

