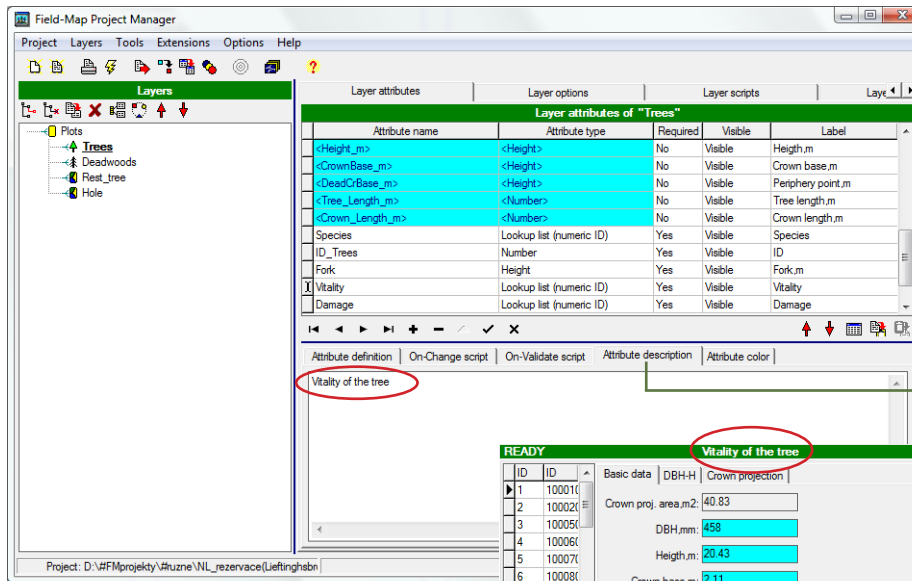


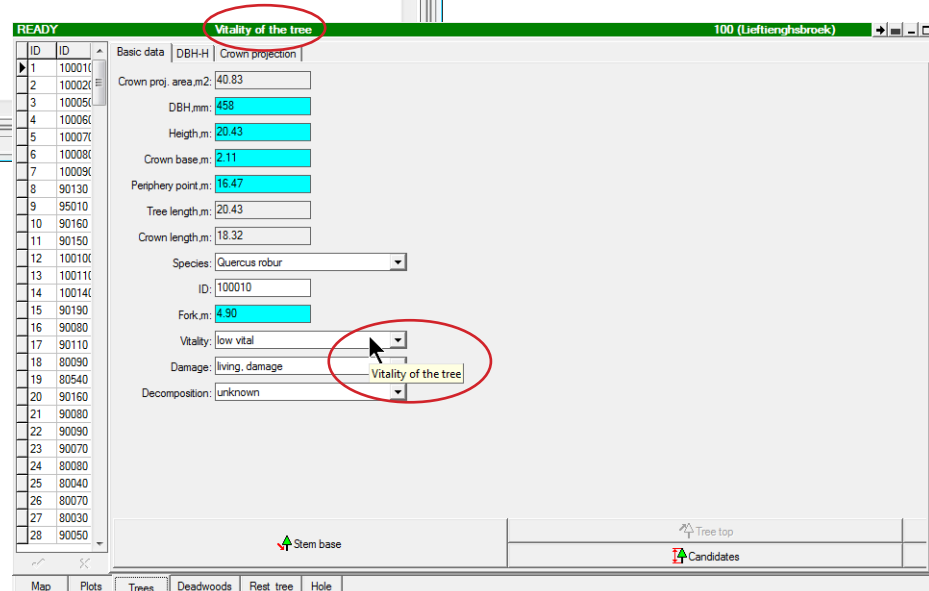
Attribute description

Attribute description allows a user to describe an attribute in words. If a description is available for the attribute, it is shown in Field-Map Data Collector. When a user moves the mouse pointer over the attribute, the description is shown as a hint of the input control and also in application title bar.



Attribute description

screenshot from Field-Map Data Manager



screenshot from Field-Map Data Collector