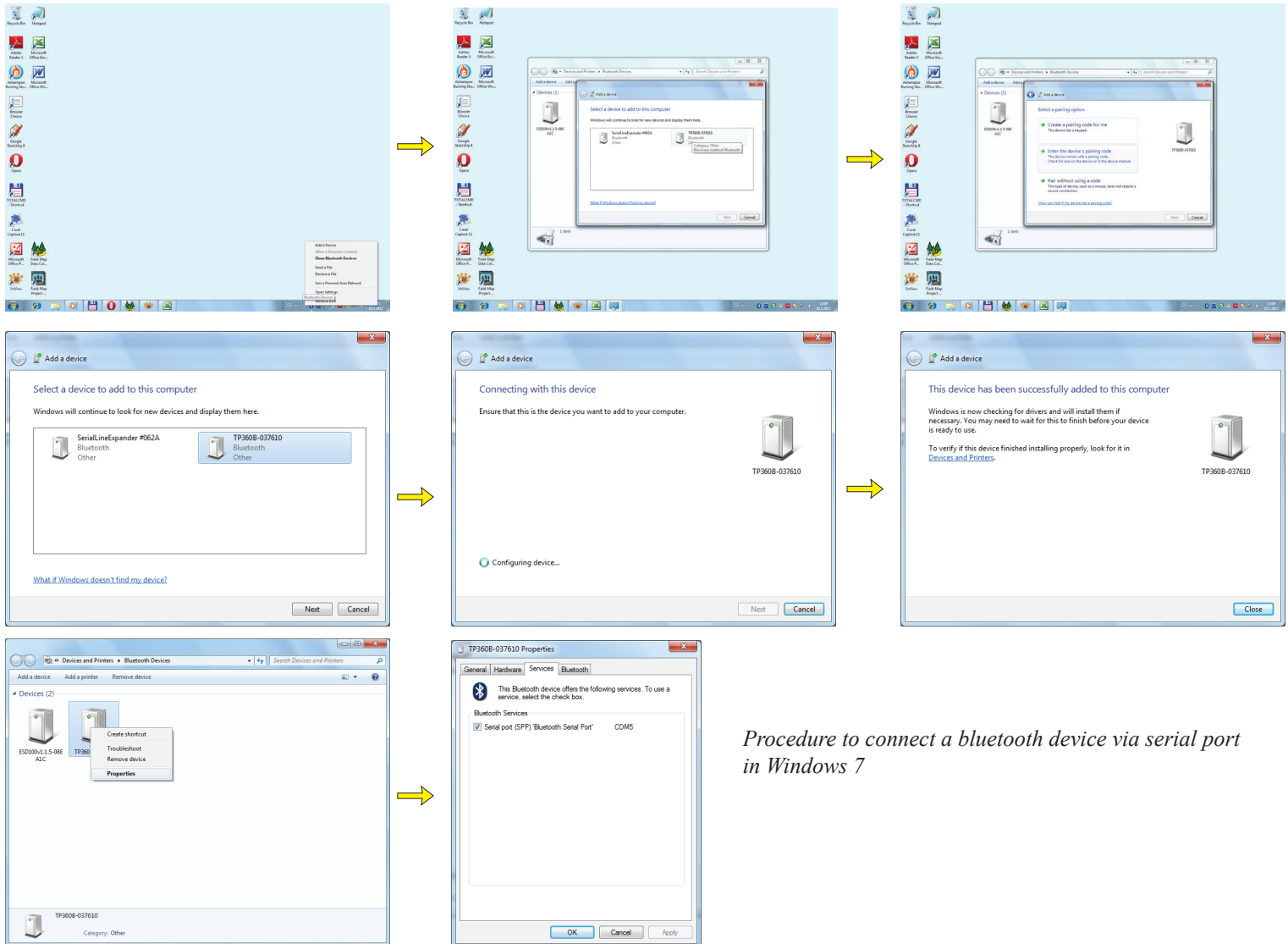


## Bluetooth connection

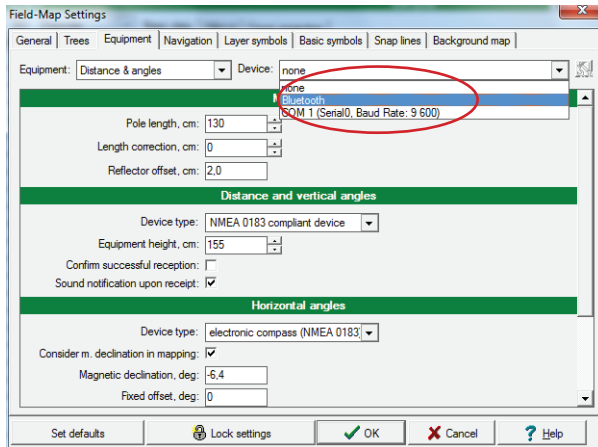
Before you connect a bluetooth device, it has to be paired in Windows.

Note: Some devices without authentication do not need to be paired.

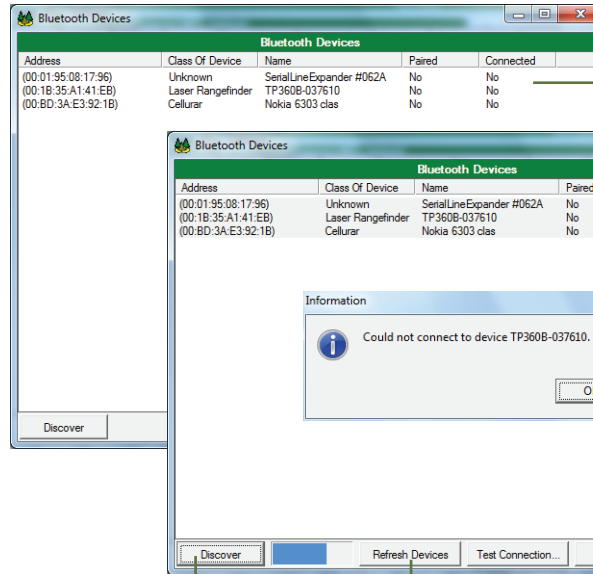


*Procedure to connect a bluetooth device via serial port in Windows 7*

## Bluetooth connection (cont.)



Select Bluetooth from device options

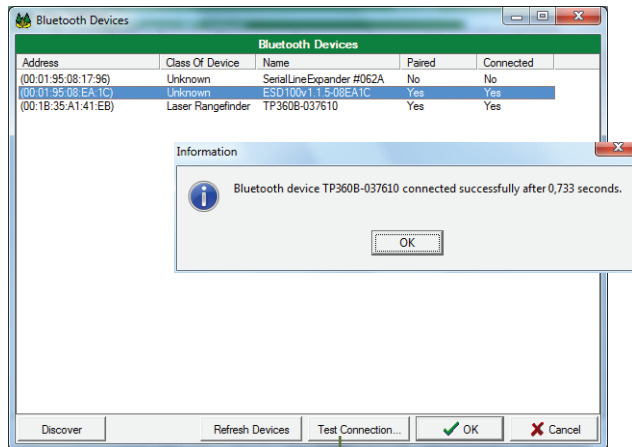


List of available Bluetooth devices

Discover new devices

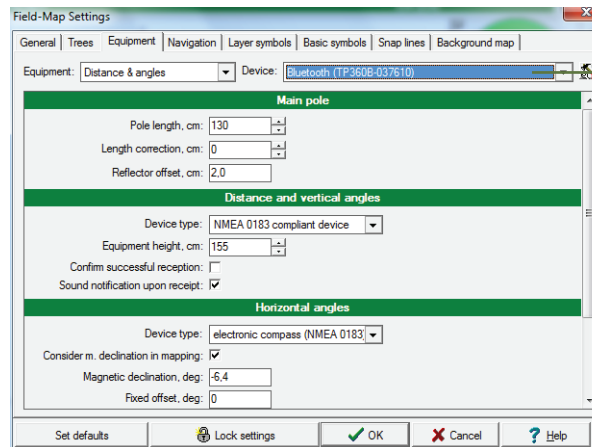
Refresh devices

Re-read device names. It can take a long time if there are many devices in the list.



Test connection

Try to connect to the device selected in the list. If the connection is successful a connection time is displayed.



Bluetooth device is connected

**Note:** Sometimes you have to allow device to connect. You can do that from a Bluetooth menu accessible by clicking Bluetooth icon in the taskbar.