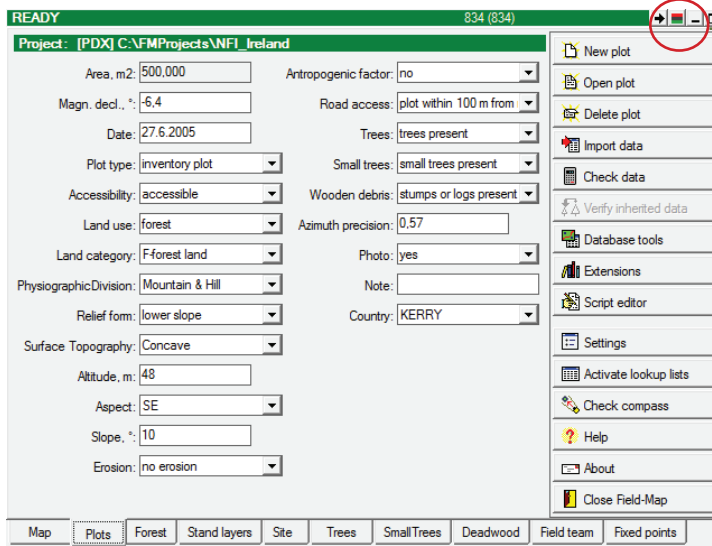
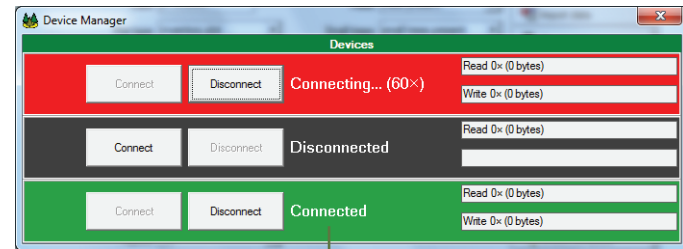


Device manager

A device manager allows you to easily connect and disconnect measuring devices. The device manager can be displayed by clicking the **signal button** (right side of top title) or with “**Ctrl+Alt+D**” shortcut.



Signal button of the device manager



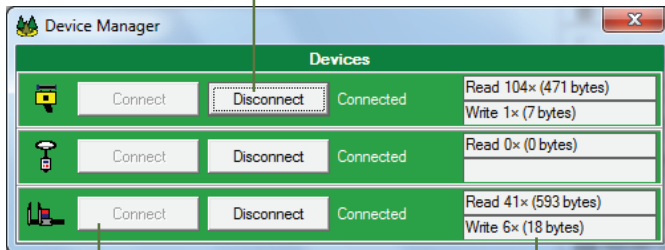
Connection status

Connection status of a device. The background color and signal button color correspond.

For serial devices status “Connected” does not mean that device is physically connected to COM port.

Disconnect

You can force a device to be disconnected. In the case all devices are disabled or disconnected it can save about 5-10% of computer battery life time.



Connect

Connect a device

Statistics

Amount of data transferred between computer and device