

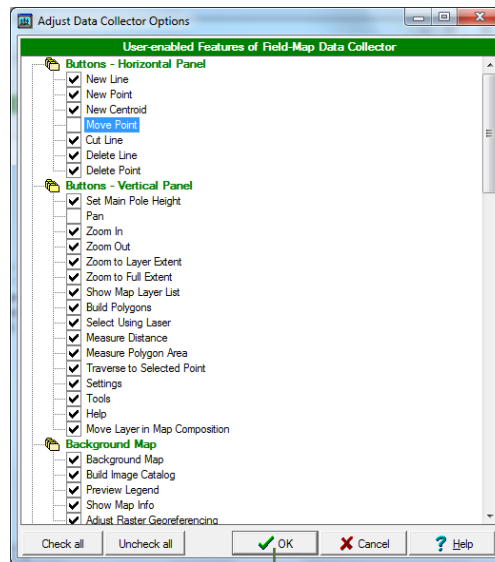
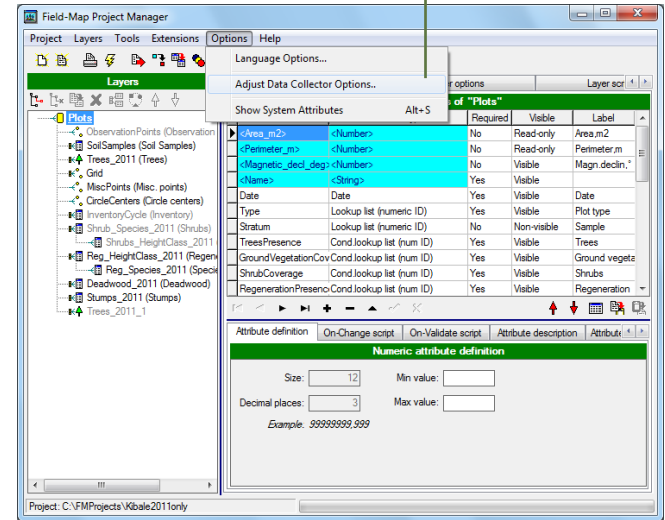
## Data Collector options

This functionality brings possibility to enable or disable certain features of Field-Map Data Collector for a particular project. Disabled features will not be available via the user interface of Field-Map Data Collector.

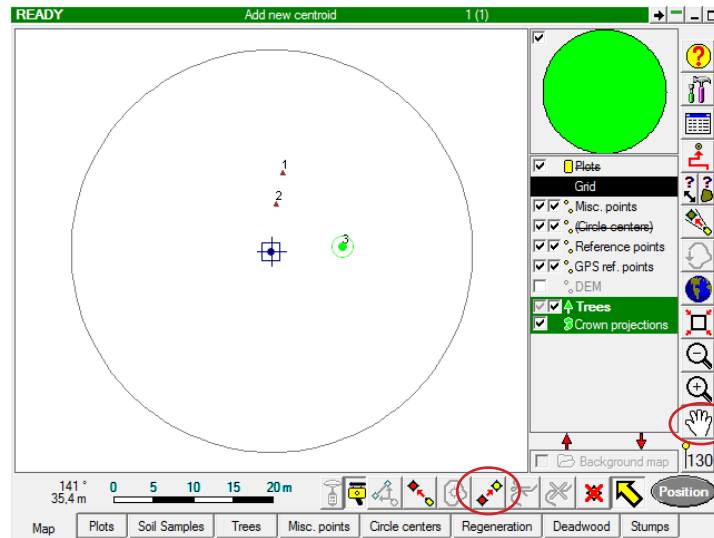
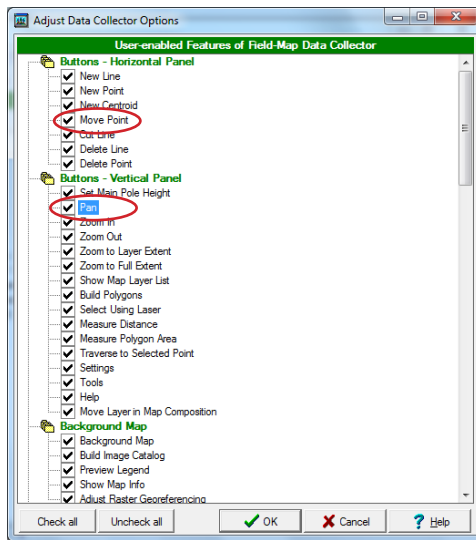
This allows a person managing the project to simplify the user interface of Data Collector by removing the functions not needed for a particular project/methodology. It can be also used to hide some advanced and possibly dangerous (if not used properly) tasks from the field users without adequate permissions to perform them.

## Adjust Data Collector options

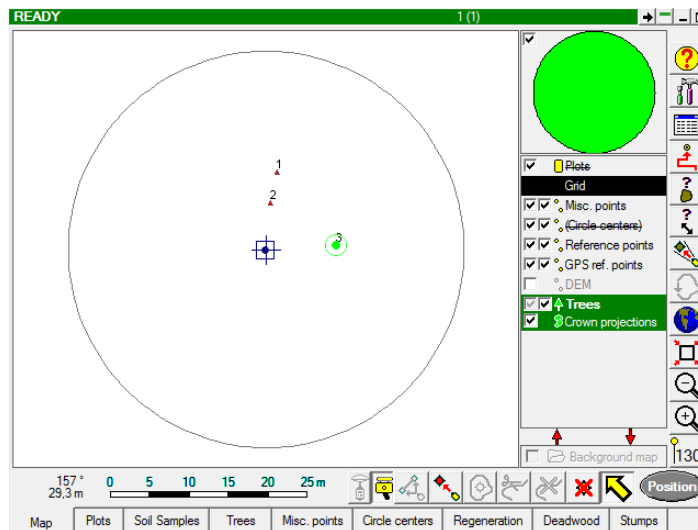
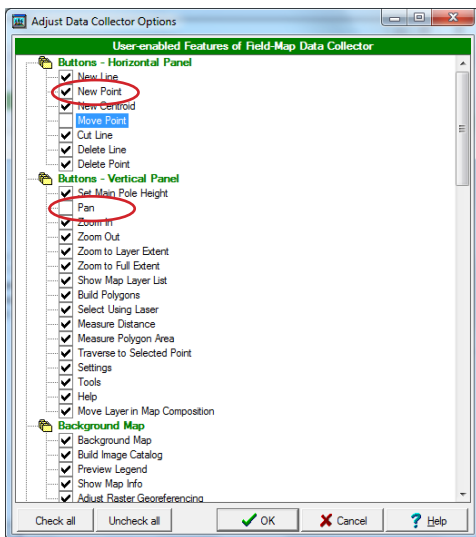
1. Select the menu item **Options > Adjust Data Collector Options**.
2. Check/uncheck the features you want to enable/disable.
3. Click the **OK** button.



## Adjust Data Collector options - example



screenshot from Field-Map Data Collector ("move point" and "pan" features are visible)



screenshot from Field-Map Data Collector "move point" and "pan" features are hidden