

Adding a layer from template

A template can contain also its own lookup lists, symbols and scripts to bring a new functionality to a project.

Note

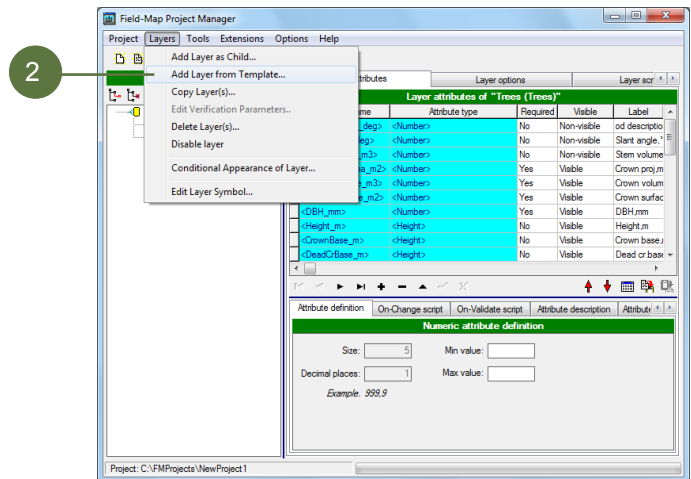
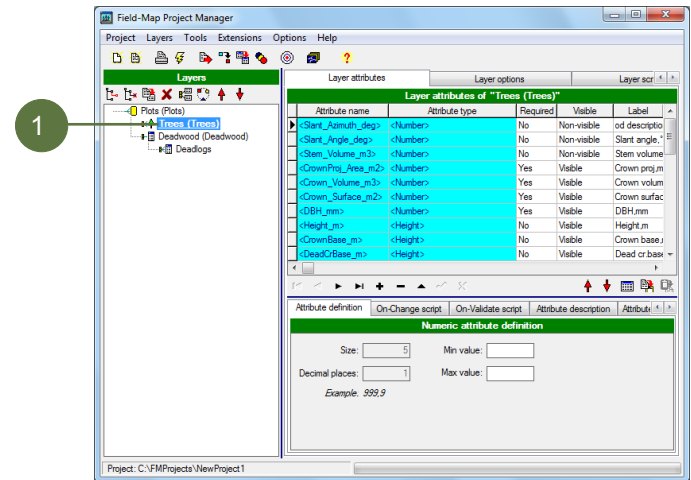
Each template allows you to add one main data layer together with corresponding child layers. The names of new layers are already predefined in the template but they can be changed if necessary. You can freely rename the main data layer created from the template.

Underlying data and GIS layers can be renamed too. Their names consist of the name of the main layer followed by underscore (optional) and the name of a child layer from the template.

Adding a layer from template

1. **Activate a parent layer** to which you want to add a child layer from a template. If a GIS layer is created from a template it is always connected directly to plot layer.
2. Select the menu item **Layers > Add Layer from Template**.

Dialog box “Add layer from Template” appears.



Adding a layer from template (cont.)

3. Select a file containing a template you want to use. There can be more files, each of them containing several templates.
4. Select a particular template you want to use from the list of templates contained in the file selected in the previous step.
5. Type name of the new layer.
6. Tag the desired options.
7. Click the **OK** button.
8. The new layer from template is created.

