

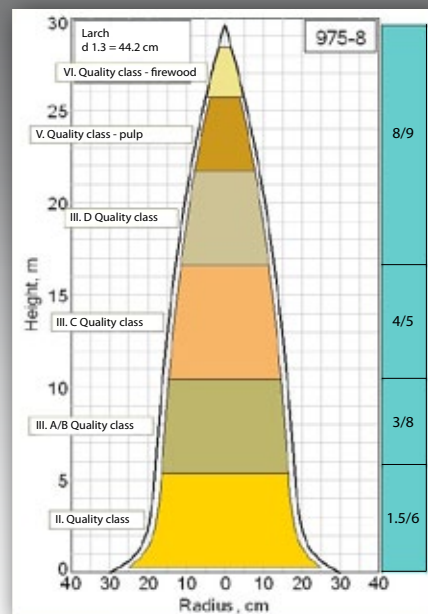
Standing volume assessment

with Field-Map technology

Field-Map is a comprehensive software and hardware technology for effective computer aided field data collection and subsequent data processing. Field-Map product line combines the flexible real-time GIS software Field-Map with electronic equipment for mapping and dendrometric measurement.

Field-Map Stem Analyst is a software tool used for:

- Defining parameters for global stem curve model
- Defining assortments on the inventory plot



The parameters for global stem curve model are defined based on measured stem profiles. One can measure sections of felled trees or use the so called six point method on standing trees.

Output of the data analysis

- Global stem curve model for individual species or species groups
- Model statistics
- Charts showing diameter and volume residuals of the model
- Profiles of individual sample stems
- Stem volume calculation

Advantages

- Definition of assortments, dimensions, quality, financial value - so called flexible assortments
- Definition of assortments scenarios, preference of certain assortments, allowed damage classes and decay degrees, etc.
- Calculation of assortments broken down by volume classes
- Selection of global stem curve model



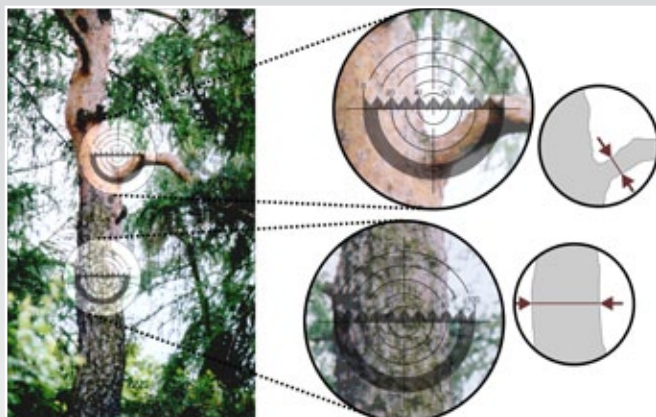
A reticle integrate in a scope enables to measure the remote diameter at any tree height

Equipment used for standing volume assessment

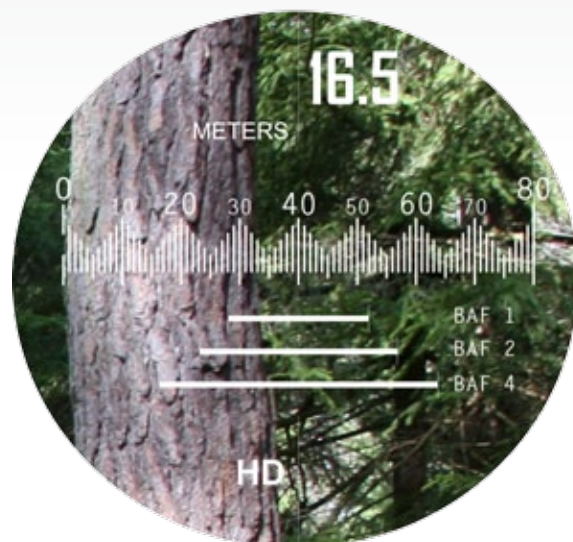
The following hardware sets can be used for standing volume assortment:

- Complete set on tripod: it is used for stem profile measurement. Stem profile measurement is performed if general existing models of stem profiles cannot be used. Field-Map enables to develop new stem models that can better characterize the stem shape of given species in given area.
- Lightweight hardware set contains only ultra-mobile rugged PC, lightweight laser rangefinder and caliper (or tape) for diameter measurement. This set is used for measurement of homogeneous sections on sample trees. Work with this set is very fast and effective.

You can find more about hardware sets on www.field-map.com in the Field-Map catalogue.



To increase the accuracy of the stem profile measurement the equipment can be placed on a tripod or monopod



Lightweight technology used for assortments measurement on standing trees