

Habitat mapping

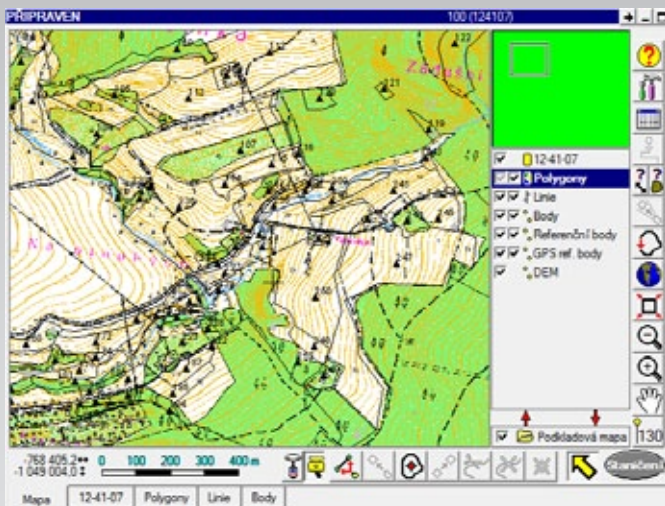
with Field-Map technology

Field-Map can be used for mapping of habitats or other areas such as the ones of high natural value.

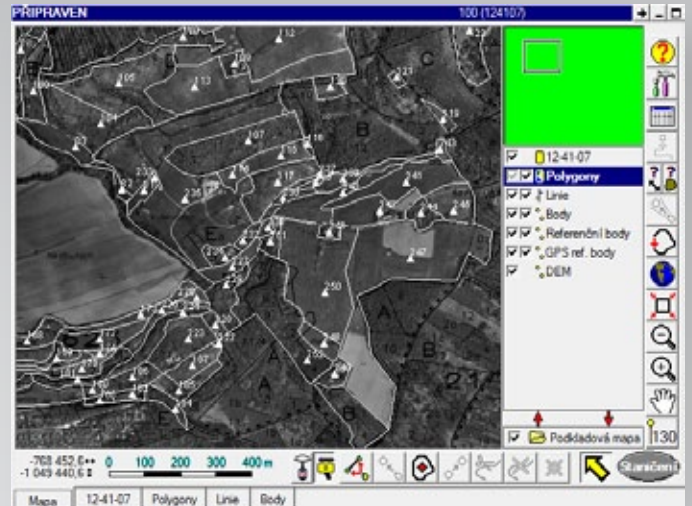
Mapping can be based on existing maps (e.g. orthophotos). Positioning is achieved by GPS. Full GIS functionality in Field-Map is also used for data processing. If mapping of the area of interest is performed by several field teams, all the data collected can be easily stored in the same database.

Since Field-Map supports Statistical Forest Inventories it can be used for monitoring of habitats (e.g. Natura 2000).

Either can be performed with Field-Map repeated or new measurements. Field-Map technology optimizes the accuracy and minimizes the costs of data collection.



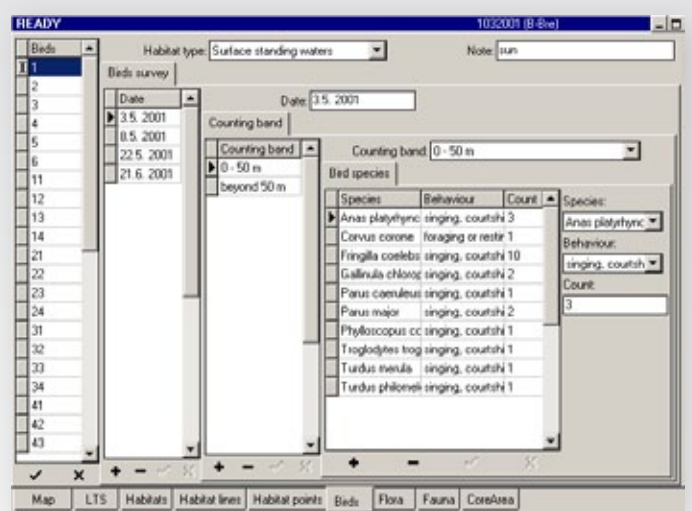
Field navigation with detailed background maps



Field navigation with orthophotos



Connection with Forest Management Planning



Data are stored in relational database tables

Equipment used for Habitat mapping

The only hardware used for habitat mapping is small field computer with a touchscreen and GPS. Field-Map software, then allows measurements and mapping and it also supports repeated measurements.

Computerized habitat monitoring is much easier than traditional data collection with paper notebooks. The field computer weighs only 1.3 kilograms and its screen has a high power light, therefore it is easily readable under sunlight. Resistance against rain is also guaranteed



GPS antenna
(hands free)

GPS
Used for mapping and for orientation in the field and on maps



Light tablet PC
Used for receiving, entering and processing data

